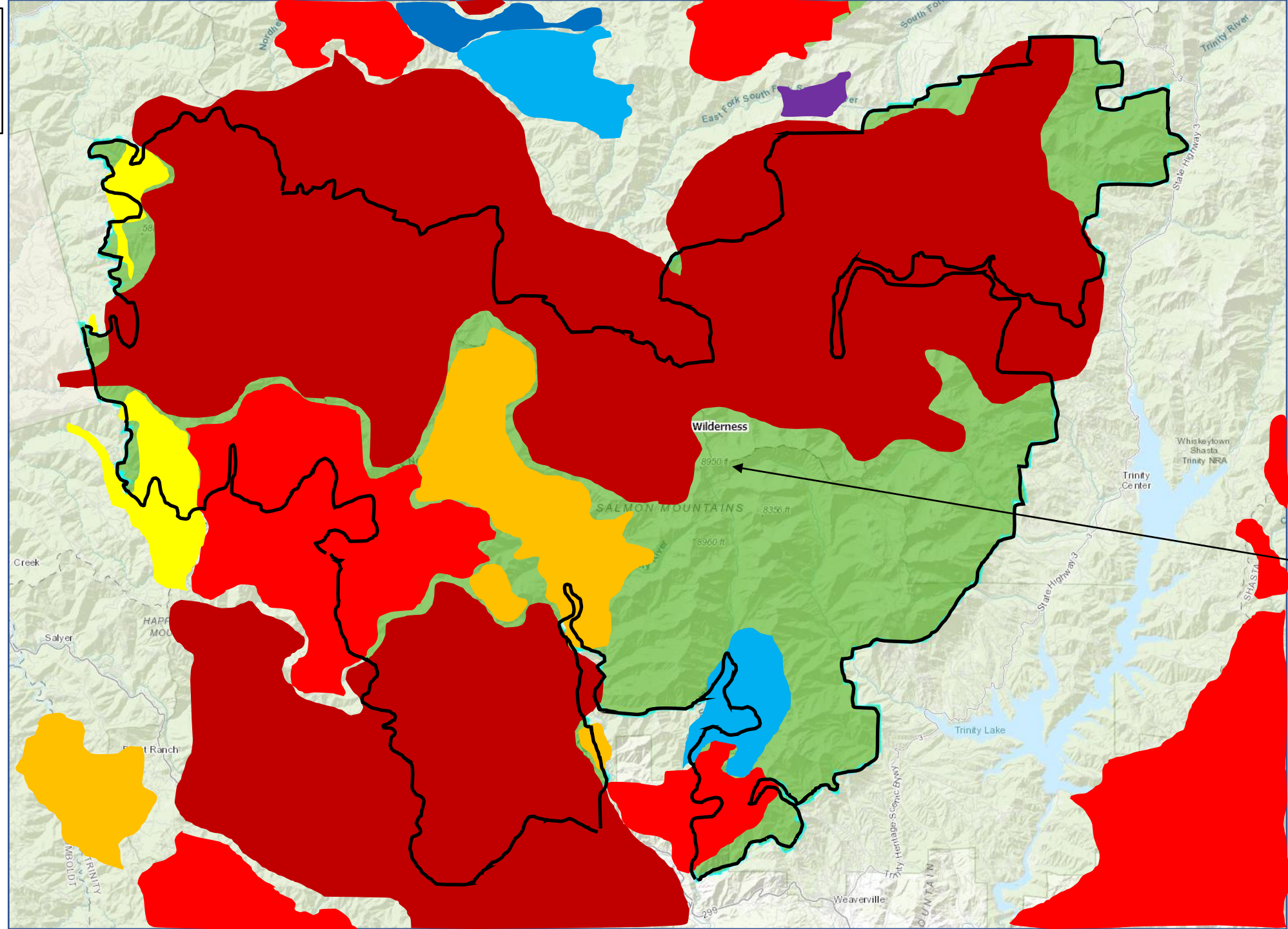


Trinity Alps Wilderness Burn Map

Sources
Wilderness map:
<https://umontana.maps.arcgis.com/apps/webappviewer/index.html?id=a415bca07f0a4bee9f0e894b0db5c3b6&find=Trinity%20Alps%20Wilderness>

Fire map:
"Fire Perimeters" PDF at
<https://frap.fire.ca.gov/mapping/pdf-maps/>



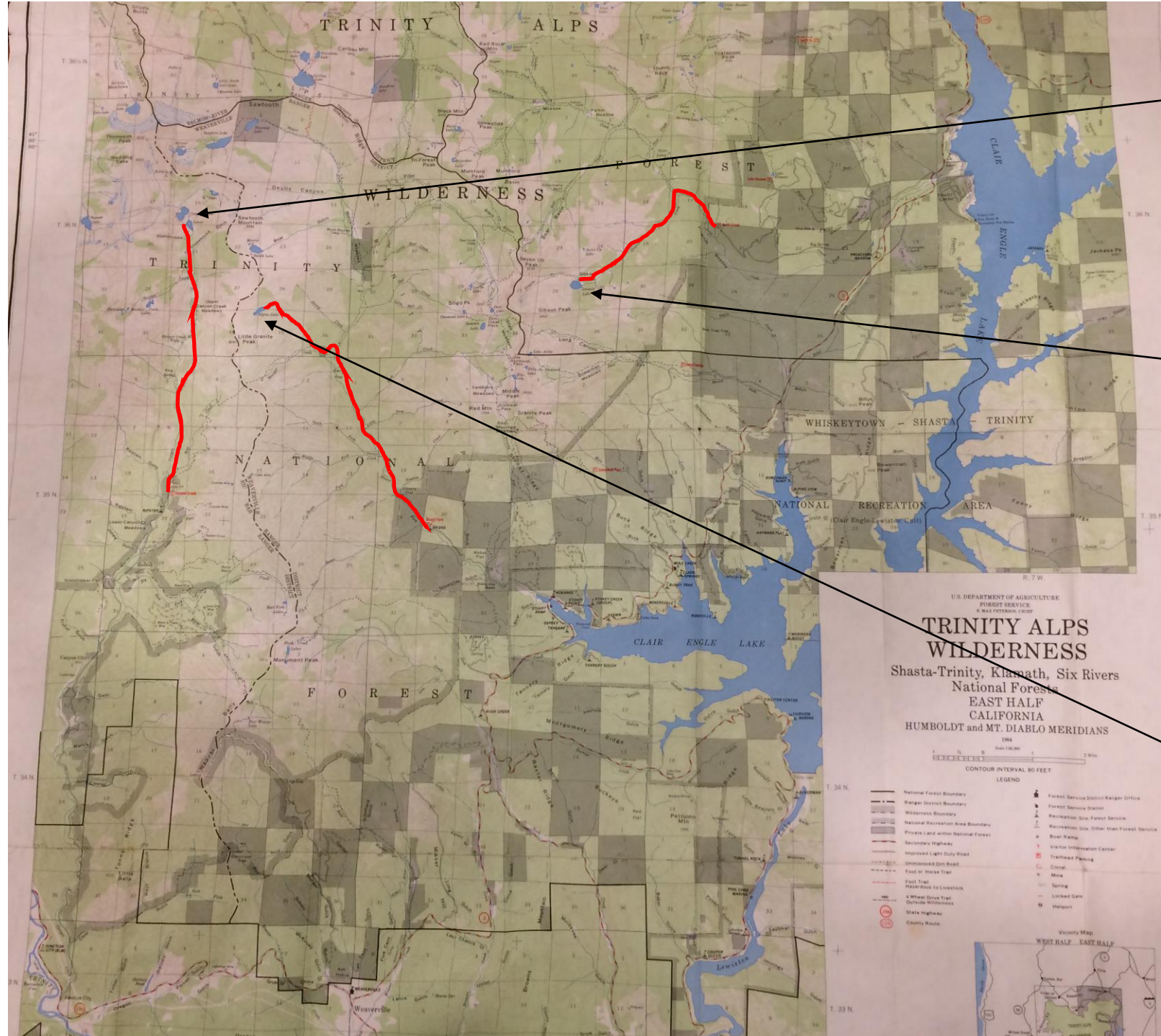
Wilderness outline

Last burned:

Dark Red	2020s
Red	2010s
Yellow	2000s
Bright Yellow	1990s
Light Blue	1980s
Dark Blue	1970s
None	1960s
Purple	1950s
Light Green	Before 1950; areas east and south of Thompson Peak

3 Trinity Alps Wilderness Backpacking Destination Suggestions:

- Large lakes
- Paved roads to trailhead
- <10 miles hike in
- <3052' climb
- Not burned recently



Canyon Creek Lakes

Granite Lake

Alpine Lake

U.S. DEPARTMENT OF AGRICULTURE
FOREST SERVICE
8 MAY 1958 (REVISED 1987)

TRINITY ALPS WILDERNESS
Shasta-Trinity, Klamath, Six Rivers
National Forests
EAST HALF
CALIFORNIA
HUMBOLDT and MT. DIABLO MERIDIANS
1984

Scale 1:62,500
CONTOUR INTERVAL 80 FEET

LEGEND

— National Forest Boundary	● Forest Service District Ranger Office
- - - Ranger District Boundary	■ Forest Service Station
▨ Wilderness Boundary	⊠ Recreation Site, Forest Service
▨ National Recreation Area Boundary	⊠ Recreation Site, Other than Forest Service
▨ Private Land within National Forest	⊠ Boat Ramp
— Secondary Highway	⊠ Visitor Information Center
— Improved Light Duty Road	⊠ Trailhead Planning
— Unimproved Con Road	○ Elevation
— Foot or Horse Trail	○ Mine
— East Trail	○ Spring
— West Trail	○ Linked Gate
— Wheel Drive Trail	○ Helipad
— Outside Wilderness	
— State Highway	
○ County Route	

Vicinity Map WEST HALF EAST HALF

Canyon Creek Lakes

#1 Trinity Alps Wilderness trail on Alltrails:

<https://www.alltrails.com/trail/us/california/canyon-creek-lakes-trail>

AllTrails says 9.3 miles one way, 3051' climb, hard/difficult

Topo! says 7.6 mi, 2,627', 3,147' to 5,774'

Campsites along the way

Very popular

Waterfalls along the way

Bugs

Smoky in the afternoon Aug 21, but Weaverville AQI 64 Aug 24

Nearby attractions:

- Thompson Peak, 9,002', high point of wilderness, class 3 south ridge from the east
- Sawtooth Mountain 8,886'
- Mount Hilton 8,964'
- Caesar Peak 8,920' class 2
- Sapphire Lake
- L Lake
- Forbidden Lakes